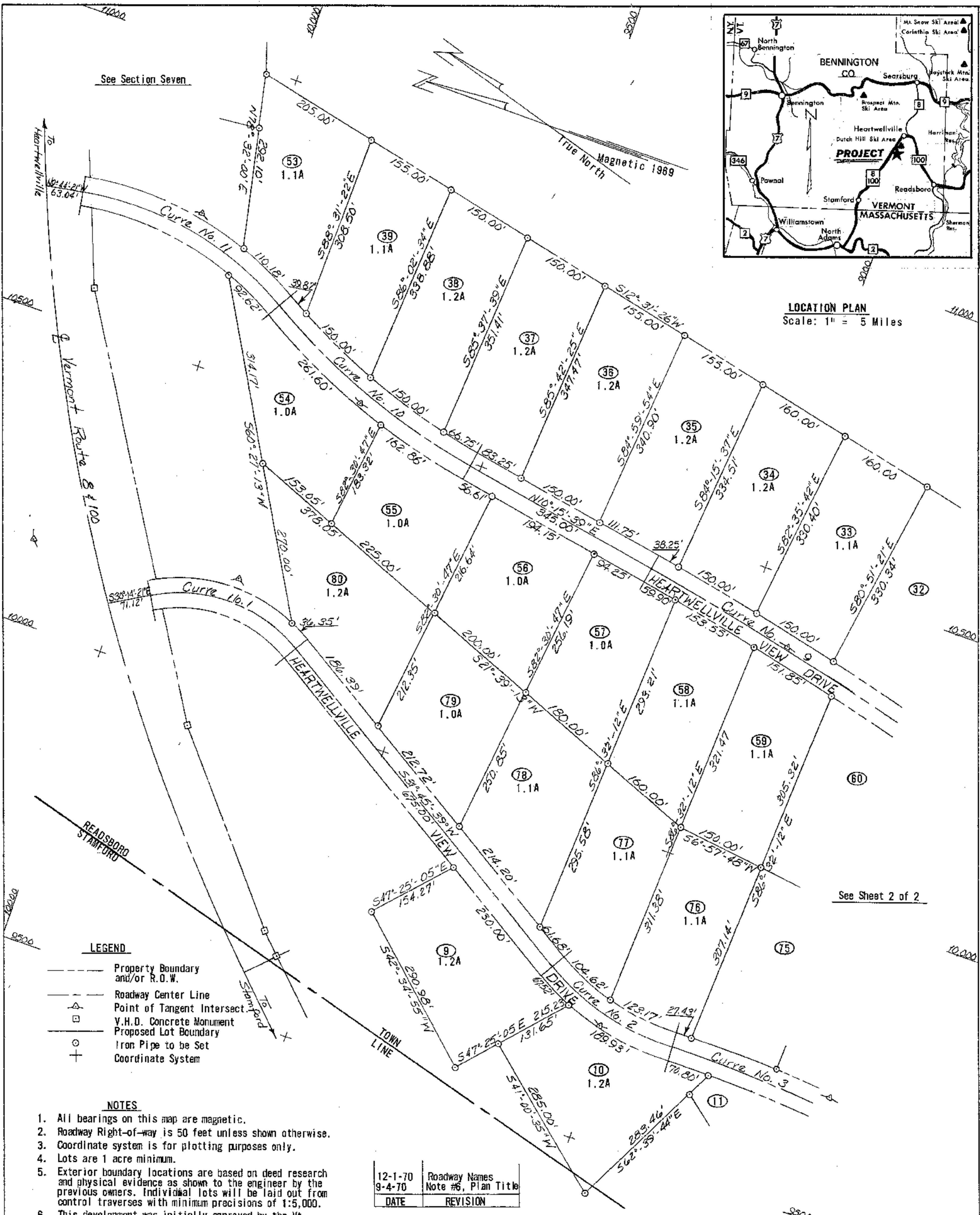


LOCATION PLAN
Scale: 1" = 5 Miles



See Section Seven

True North
Magnetic 1989

See Sheet 2 of 2

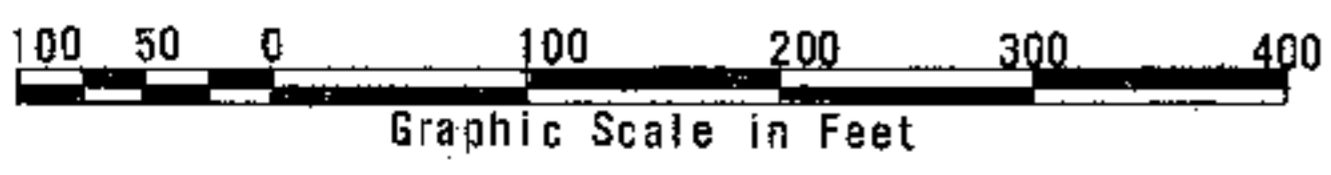
LEGEND

- Property Boundary and/or R.O.W.
- Roadway Center Line
- △ Point of Tangent Intersect
- V.H.D. Concrete Monument
- Proposed Lot Boundary
- Iron Pipe to be Set
- ⊕ Coordinate System

NOTES

1. All bearings on this map are magnetic.
2. Roadway Right-of-way is 50 feet unless shown otherwise.
3. Coordinate system is for plotting purposes only.
4. Lots are 1 acre minimum.
5. Exterior boundary locations are based on deed research and physical evidence as shown to the engineer by the previous owners. Individual lots will be laid out from control traverses with minimum precisions of 1:5,000.
6. This development was initially approved by the Vt. Environmental Protection Division under the title of "Plan of Development of Heartwellville View."

DATE	REVISION
12-1-70	Roadway Names
9-4-70	Note #6, Plan Title



I hereby certify that this plan is correct to the best of my knowledge.
8-24-70 *Jack C. Hake*
Jack C. Hake, L.S. #54

Curve No.	Δ	D	R	T	L
1	82°-0'-0" Rt.	22°-57.07'	249.64'	150.00'	270.14'
2	34°-0'-0" Lt.	14°-0.82'	408.88'	125.00'	242.62'
3	15°-0'-0" Rt.	2°-44.58'	2088.86'	275.00'	546.88'
9	5°-0'-0" Lt.	0°-57.73'	5955.11'	260.00'	519.68'
10	20°-30'-0" Rt.	4°-56.02'	1181.32'	210.00'	415.51'
11	40°-30'-0" Lt.	10°-34.12'	542.12'	200.00'	383.20'

P.I.	1	2	3	9	10	11	
9821.70,	10190.60	9013.96,	9690.55	8614.26,	9706.18	8922.54,	10387.03
9724.51,	10532.21	10076.83,	10741.91				

FINAL PLAT SECTION 8
ALPENWALD SUBDIVISION
(Formerly Heartwellville View)
Readsboro & Stamford, Vermont

DUPRESN, HENRY
REGISTERED PROFESSIONAL CIVIL & SANITARY ENGINEERS
JACK C. HAKE, L.S. #54
LAND SURVEYOR

DRAWING NO. 69-1327
DESIGN ENGR. J.C. Hake
SURVEY CHIEF WD 7-70
SCALE 1"=100'
PLOTTED BY AKK 7-70
SHEET 1 OF 2
TRACED BY EHP 7-70
DATE July 29, 1970
CHECKED BY JCH 7-29-70
APPROVED

C3856